



Trail building and nature conservation

European perspective



Patrick Jansen

Content presentation

€ Introduction

€ What is a sustainable trails?

€ Does EU legislation make trail building impossible?

Introduction

Introduction

€ Mountain biker since 25 years

- World champion masters 2013, three times Dutch champion masters, Benelux champion



Introduction

€ Director Probos Foundation - knowledge and innovation centre on sustainable forest management (1996-now)

€ Research and capacity building



- Study on physical impacts and social conflicts of mountain bikers in the Netherlands
- Research on sustainable trail building in the Netherlands
- Intermediate between mountain bikers and forest managers
- Demonstration projects: building of three mountain bike trails

Introduction

€ Director/owner Tracks & Trails (2009-now)

- Design and construction of mountain bike trails and skill parks (22 trails constructed (>500 km), 7 skill parks designed/constructed, 19 trails in preparation (>500 km))



What is a sustainable trail?

What is a sustainable trail?

A trail that reduces social conflicts and damage to religious/spiritual sites



What is a sustainable trail?

A trail that reduces damage to soils and geological values



What is a sustainable trail?

A trail that reduces damage to vegetation and plants



What is a sustainable trail?

A trail that reduces damage to cultural heritage



Archeoduct in the Strubben
Kniphorstbosch across prehistoric
road

What is a sustainable trail?

A trail that reduces disturbance of fauna

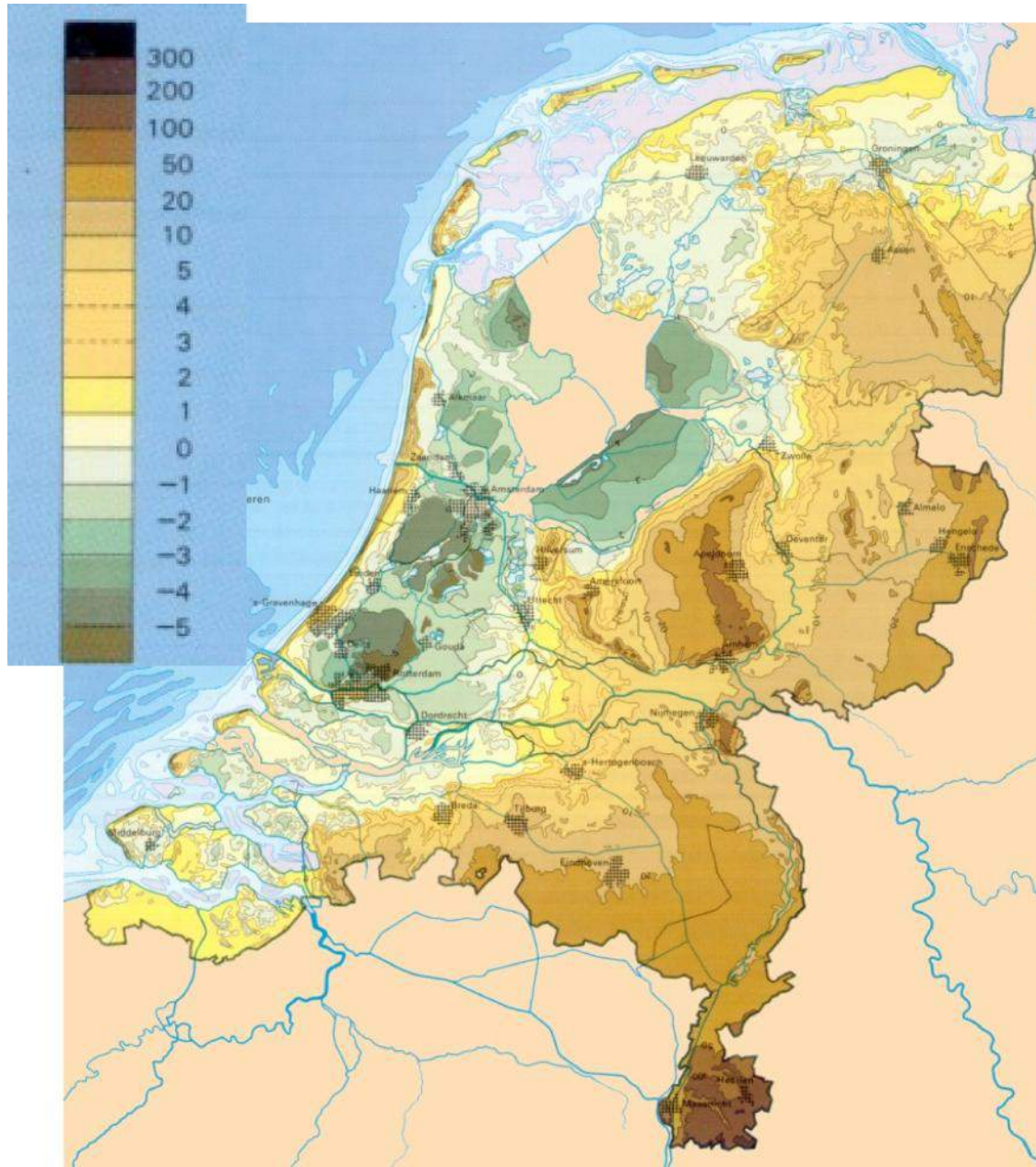


Badger

What is a sustainable trail?

A trail that is fun, safe and challenging to ride for the target group!!





Does EU legislation make trail
building impossible?

EU Nature directives

€ EU *f* Birds and Habitats Directives

€ Accessing Countries will have to implement these Directives

€ EU Habitats directive

- Protects over 1.000 animals and plant species and over 200 so called "habitat types" of European importance (Natura 2000)

€ EU Birds directive

- Protects all wild bird species naturally occurring in the EU.

Birds directive

€ EU Birds directive *f* implemented in Dutch Flora and Fauna Act *f* Dutch Code of Conduct for Forest management:

- Deciduous and mixed forest: no activities between March 15 and July 15
- Conifer forest: between March 15 and July 15 only activities if no breeding birds *f* inventory necessary

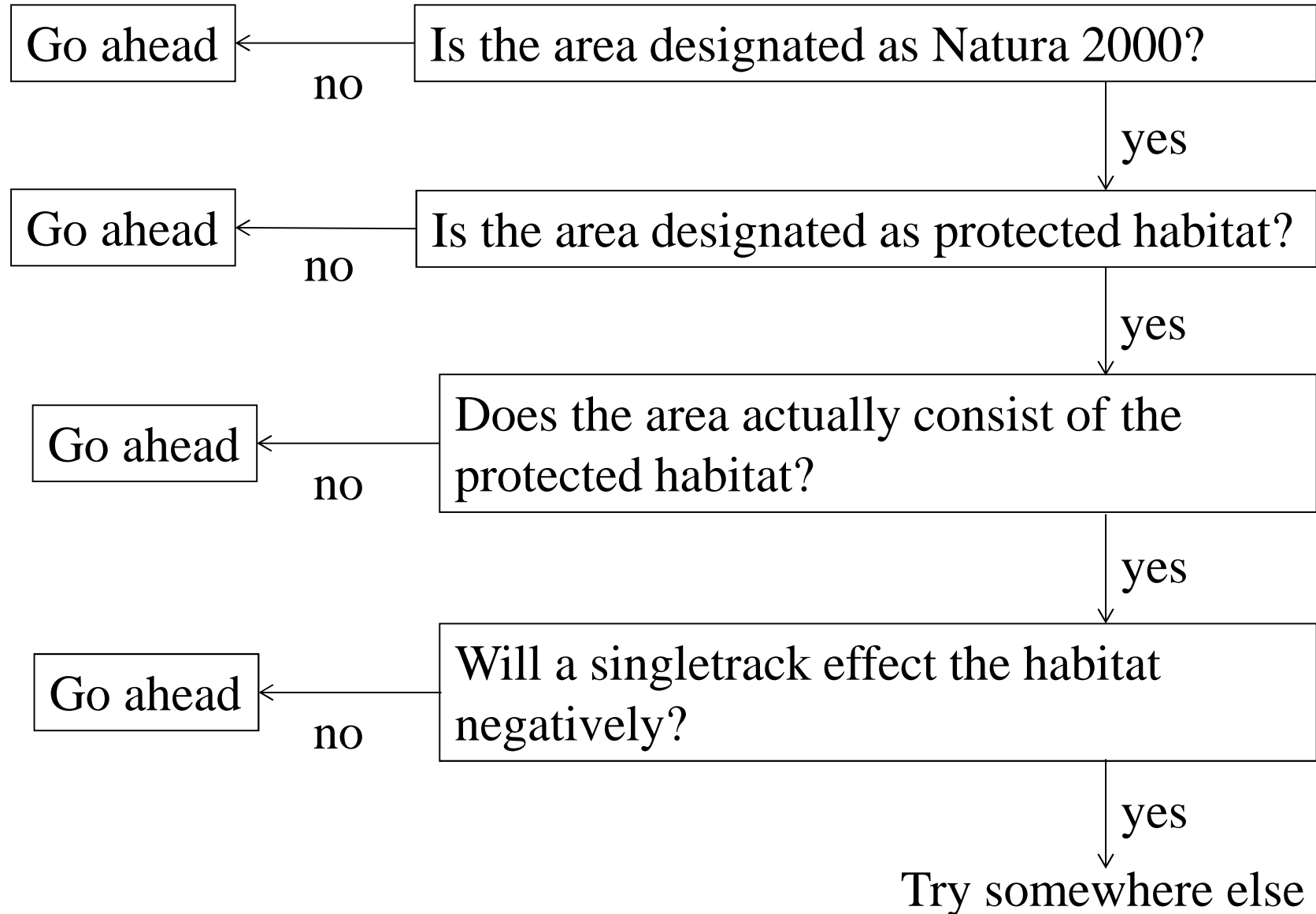
In practice:

- No trail building from March 15 till September
- No trail building close to sensitive foraging, resting and reproduction sites (raptor nests)

Habitats directive

- € EUwide network of nature protection areas established under the Habitats directive
- € Each country designates Natura 2000 areas with protected **habitats** and **species**
- € Not a system of strict nature reserves where all human activities are excluded!!!

Protected habitats



Protected habitats



Protected habitats



H2160, Dunes with
Hippophae rhamnoides

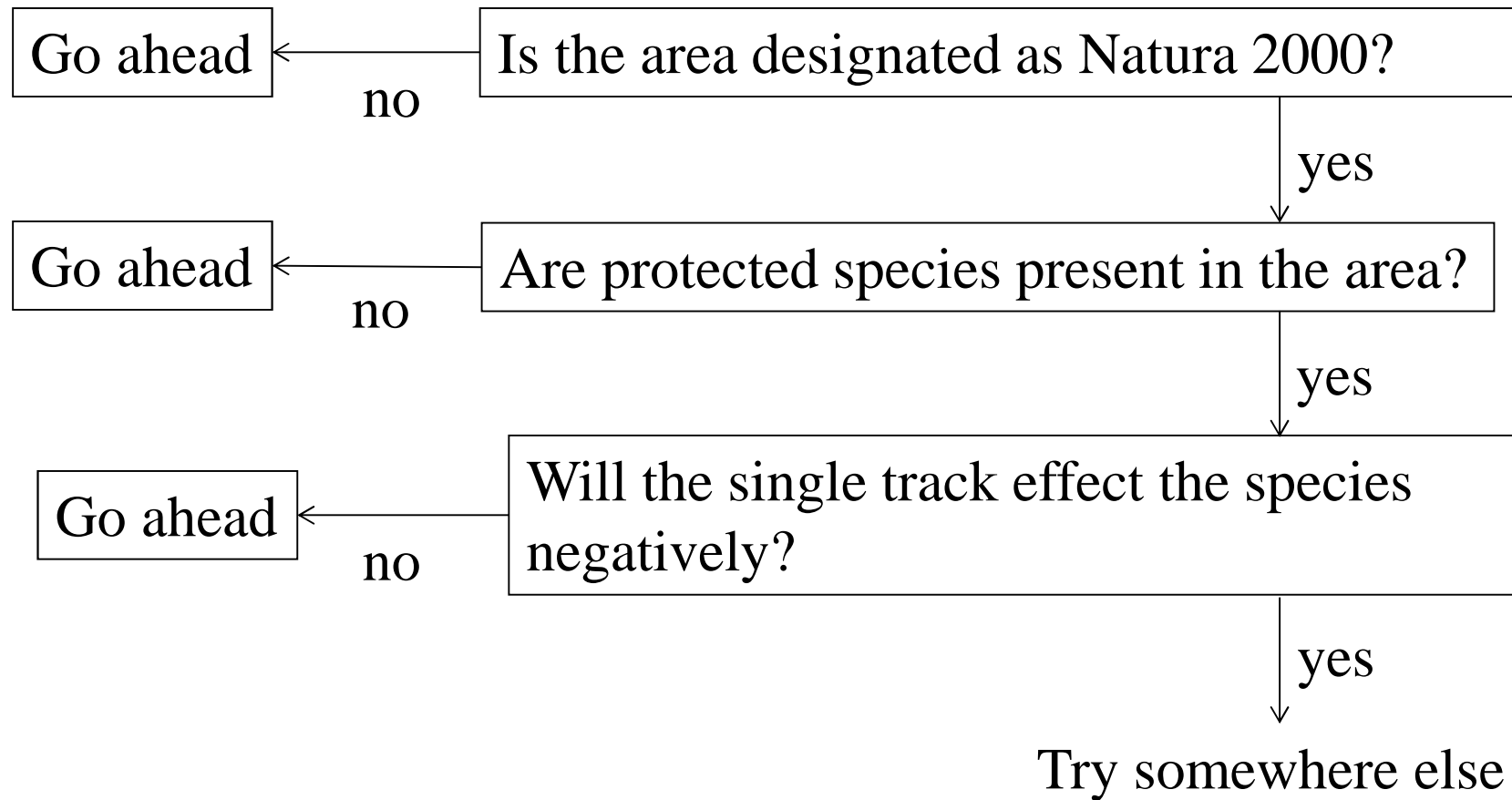


H9120: Atlantic
acidophilous
beech forests with *Ilex*



H4030, European dry
heaths

Protected species



Protected species



Flag beetle

Corné van den Bosch

Protected species



Black woodpecker