



ECF gratefully acknowledges financial support from the European Commission.



ECS manual Annex 3

April 2018



Surface

Material vs quality



Materials

- Asphalt/concrete (high quality watertight)
- Blocks/slabs/cobbles (low quality watertight)
- Stabilised gravel (stabilised gravel)
- Gravel/dirt (non stabilised dirt)



Quality

- perfectly rideable (road/racing bike)
- well rideable (city/touring bike)
- moderately rideable (trekking bike)
- badly rideable (mountain bike)
- not rideable (fat/trial bike etc.)



Asphalt/concrete, perfectly rideable



Asphalt/concrete, perfectly rideable



Asphalt/concrete, perfectly rideable



Asphalt/concrete, well rideable



Asphalt/concrete, well rideable



Asphalt/concrete, moderately rideable



Asphalt/concrete, badly rideable



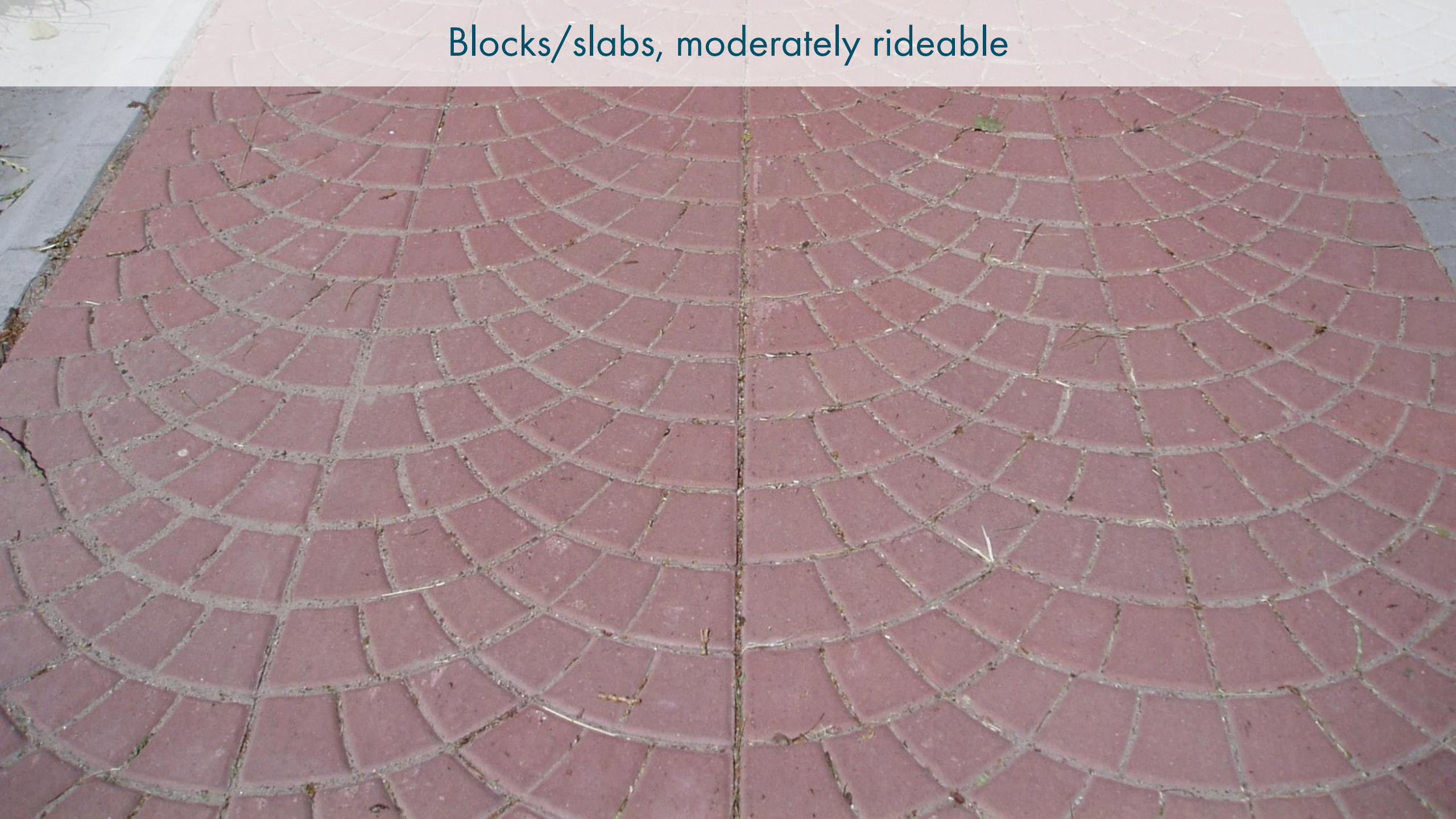
Asphalt/concrete, not rideable



Blocks/slabs, well rideable



Blocks/slabs, moderately rideable



Blocks/slabs, well rideable



Blocks/slabs, moderately rideable



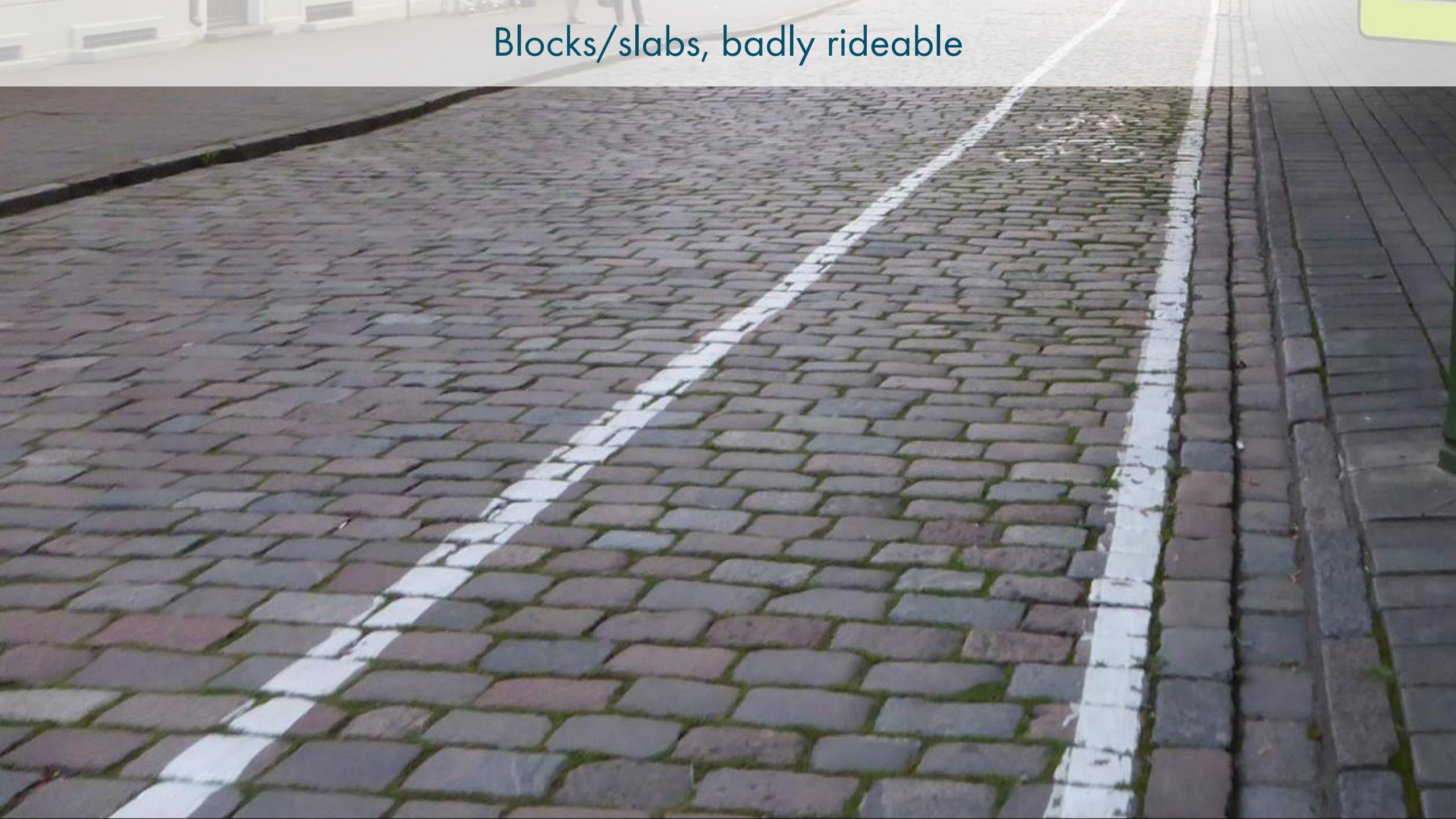
Blocks/slabs, badly rideable



Blocks/slabs, moderately rideable (cycle lane), badly rideable (rest)



Blocks/slabs, badly rideable



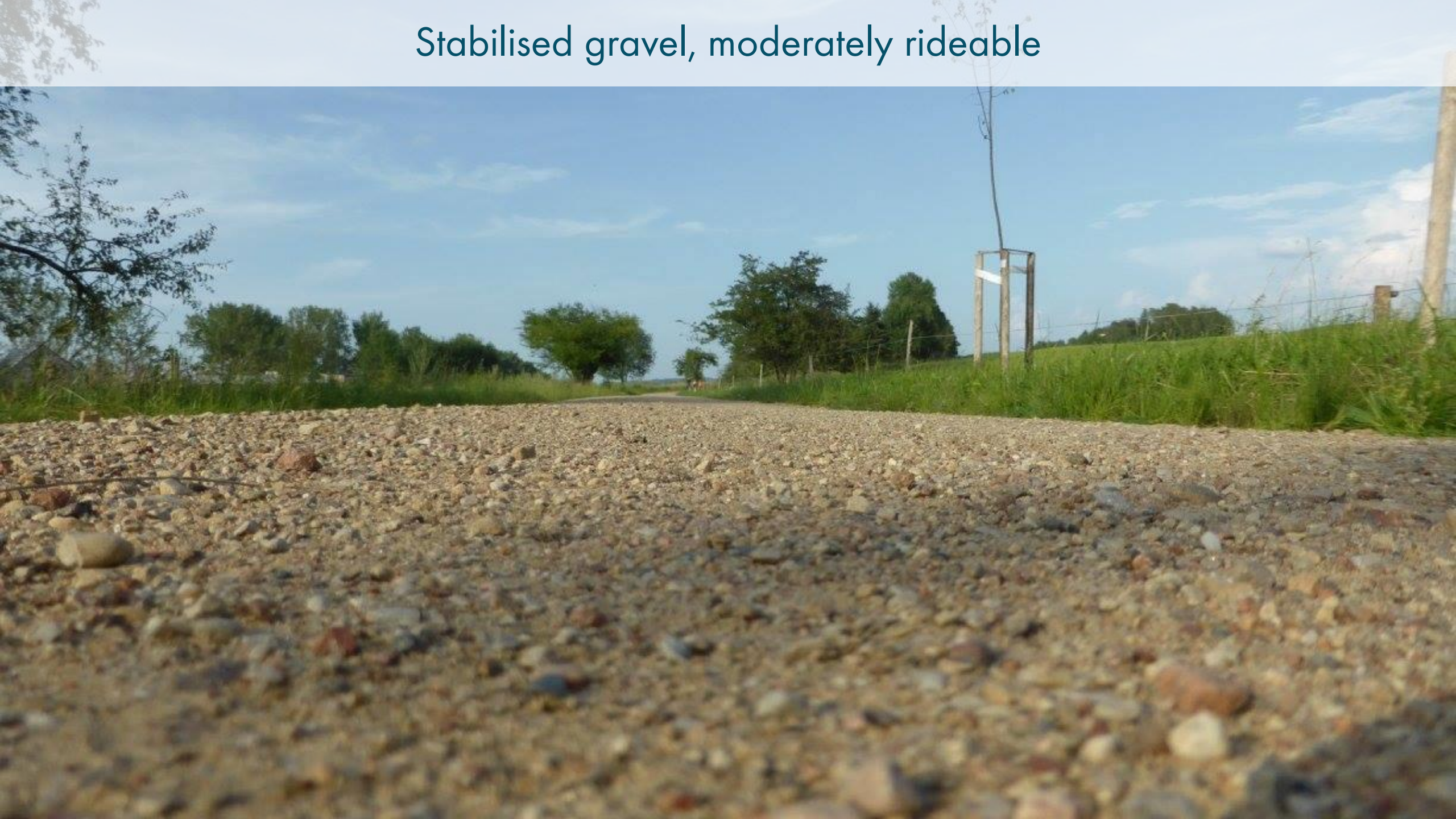
Blocks/slabs, badly rideable



Stabilised gravel, well rideable



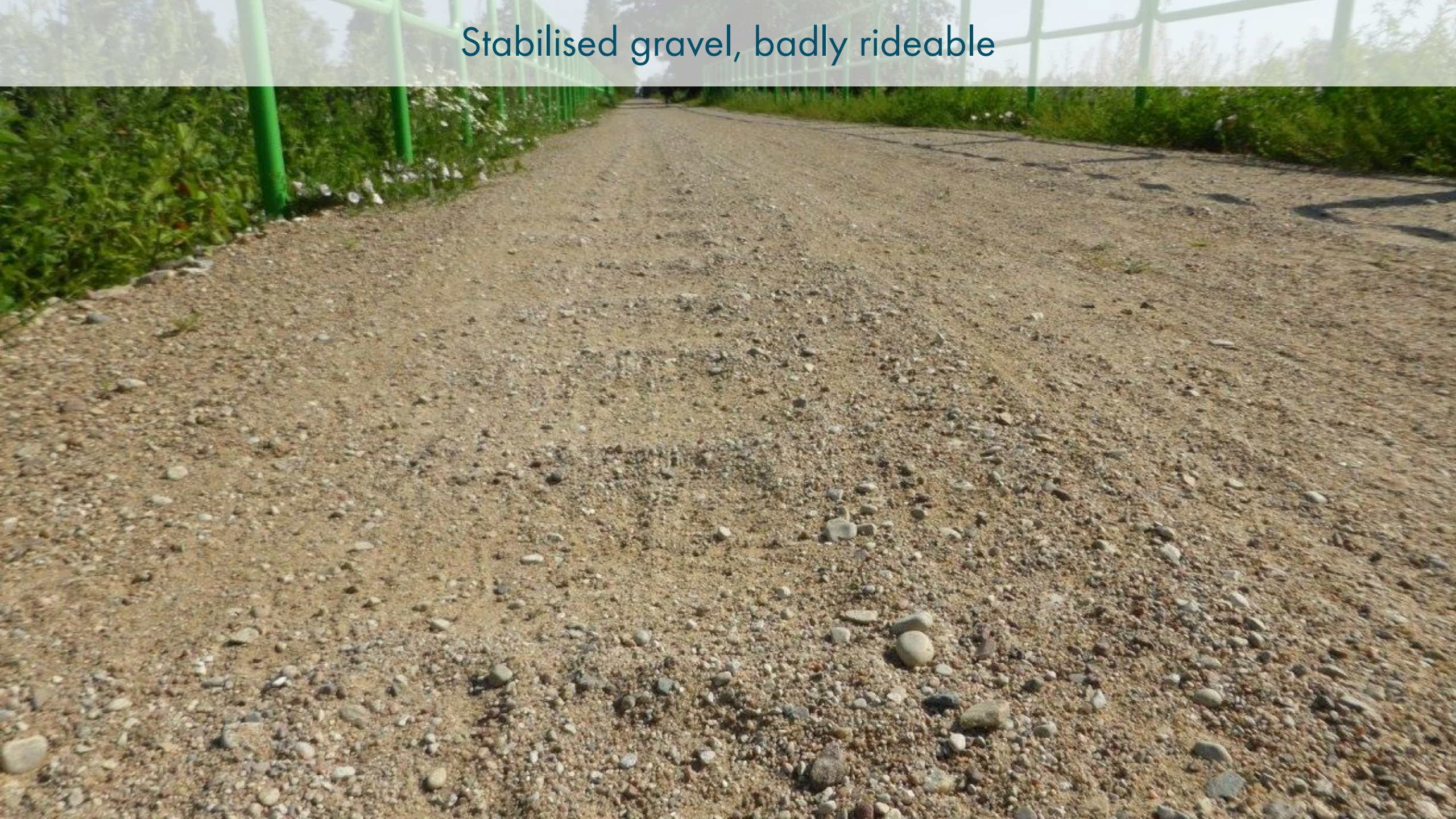
Stabilised gravel, moderately rideable



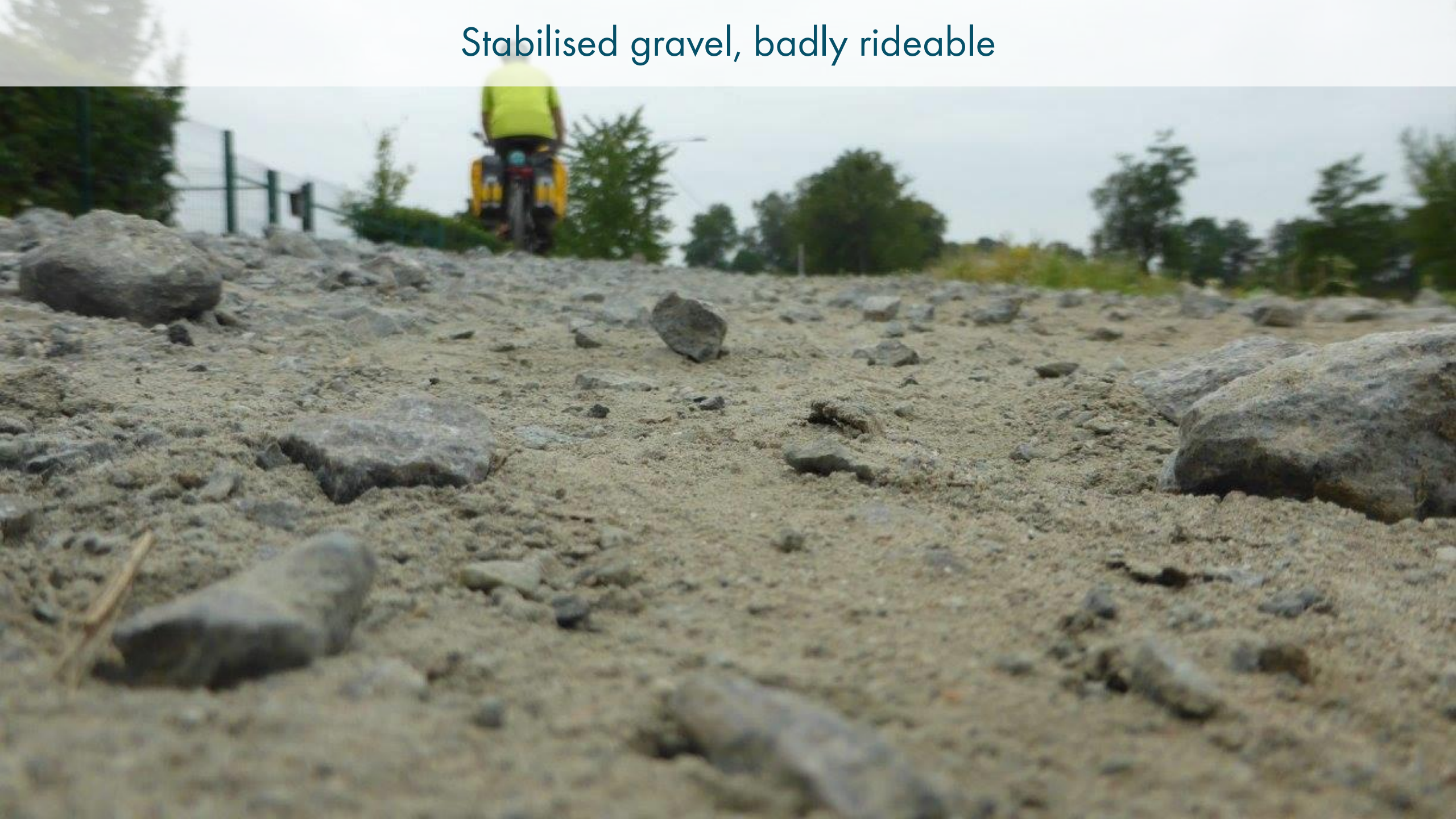
Stabilised gravel, moderately rideable



Stabilised gravel, badly rideable



Stabilised gravel, badly rideable



Stabilised gravel, not rideable



Gravel/dirt, badly rideable



Gravel/dirt, not rideable



Gravel/dirt, not rideable

