



ECF gratefully acknowledges financial support from the European commission. Nevertheless the sole responsibility of this presentation lies with the author. The European Union is not responsible for any use that may be made of the information contained therein.



# National Contributions

Annual NECC/Cs Meeting, Weil am Rhein  
Thursday 18<sup>th</sup> September 2014

Rue Franklin, 28 1000 Brussels, Belgium Phone: +32 2 880 92 74 Fax: +32 2 880 92 75 office@ecf.com

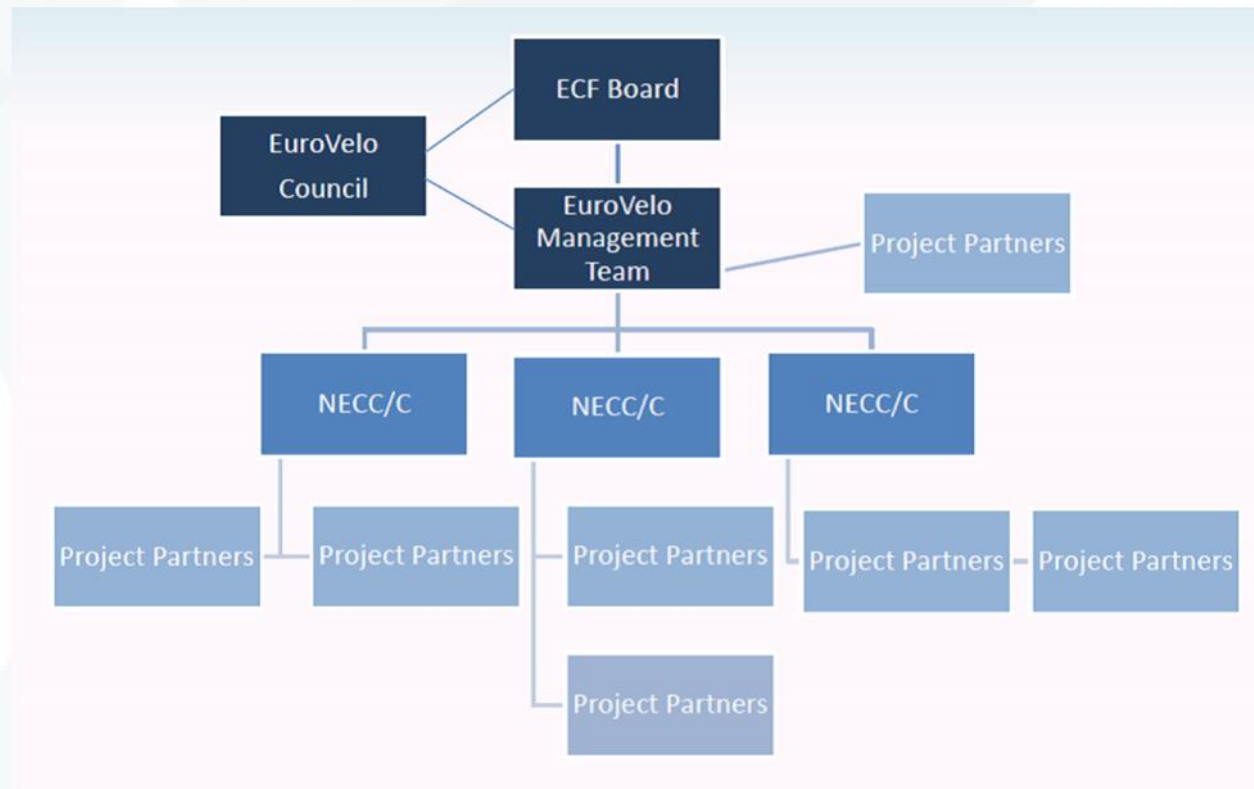
www.ecf.com

# Contents

1. What are they?
2. What's happened so far?
3. Going forward
4. Questions and comments

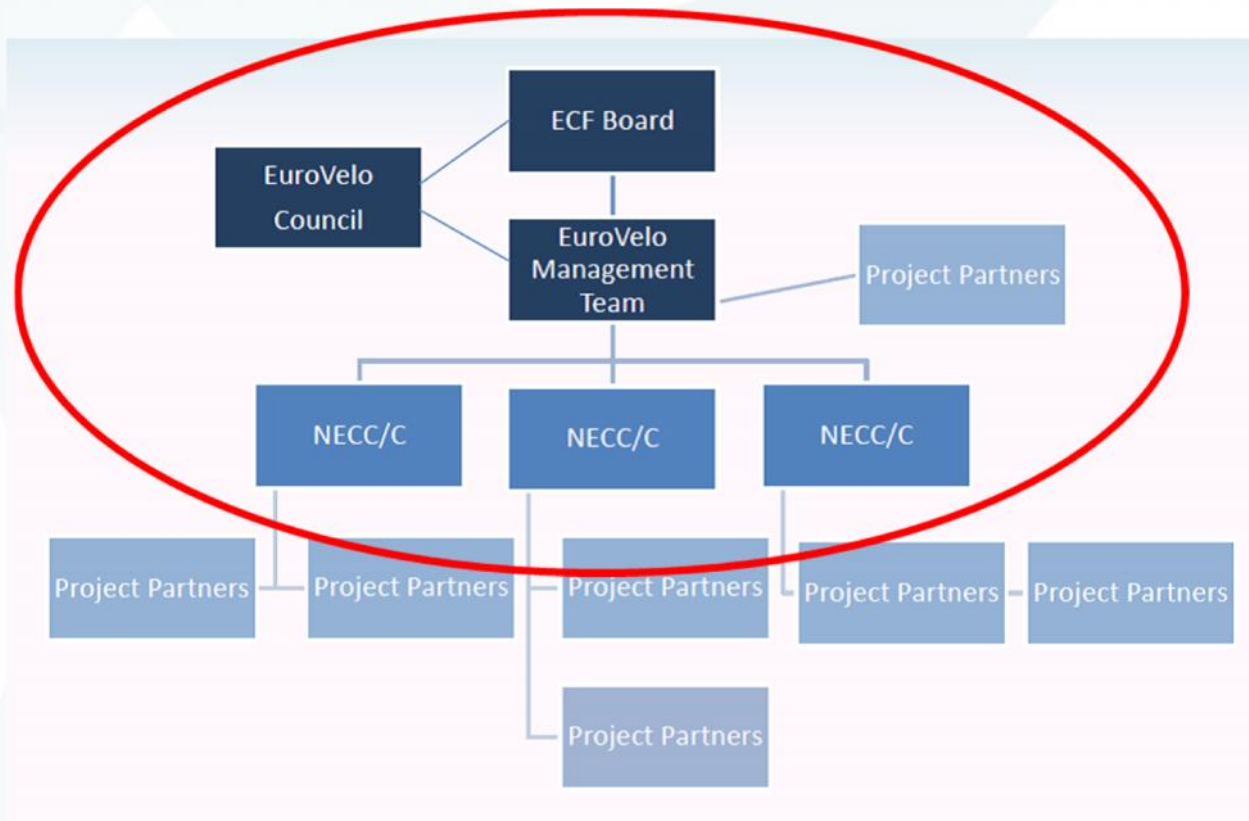
# National Contributions

## What are they?



# National Contributions

## What are they?



# National Contributions

## What do they cover?

### Regular basic services:

- EuroVelo Council Meetings
- Updates to EuroVelo.org (including EuroVelo Overview Route Database)
- Monthly newsletter for professionals
- EuroVelo Publication Series
- National EuroVelo Coordination Centres and Coordinators network (including Annual Meeting)
- EuroVelo.com (basic version for each route and country)
- EuroVelo Social Media
- Answering individual requests
- Promoting European cycle routes to European and international markets
- (EuroVelo advocacy work e.g. TEN-T, regional policy etc.)

# National Contributions

## What don't they cover?

Regular advanced services:

- Advanced services (web development and management, coordination etc.) for specific routes (e.g. EuroVelo 15)
- EuroVelo map (reprint and distribution)
- More developed promotion and communication services on the European level

Additional “out of the ordinary” services:

- Route coordination actions (add new routes etc.)
- EuroVelo route certification
- Consultancy services for specific countries (advice, presentations, evaluation, training etc.)

# National contributions

## Previous situation

- ECF's members and (general) sponsors paying most of the costs.
- But their contribution is to support the advocacy work of the ECF (not promotion or development activities).
- Difficult to finance the basic regular services sustainably with EU funding or private sources.

# National Contributions Objective

To provide sustainable financial background for the basic regular services



# National Contributions

## The proposal

1



1



KM of EuroVelo Route

Euro

# National Contributions What has happened?

Summer 2013  
NECC/Cs Meeting

Autumn 2013  
NECC/Cs  
Consultation

Winter 2013  
EuroVelo Council  
Meetings

Spring 2014  
Decision to introduce  
contributions with  
transitional timetable

# National Contributions

## Transitional arrangements

Type of NECC/C	2014	2015	2016
Immediate	Full	Full	Full
Transition	-	50%	Full

Country	NECC/C	Approx. Length of EuroVelo Network (km)	Contribution	Category
Austria	Christian Weinberger	1,705	€ 1,705	Transition
Belarus	Minsk Cycling Community	641	€ 1,000	Transition
Belgium (Flanders)	Toerisme Vlaanderen	195	€ 1,000	Immediate
Bosnia and Herzegovina	Green Tour	10	€ 1,000	Transition
Czech Republic	Nadace Partnerstvi and CDV	2,245	€ 2,245	Immediate
Denmark	Jesper Pørksen (on behalf of the Danish Cyclists' Federation),	1,664	€ 1,664	Transition
Estonia	Vänta Aga	2,680	€ 2,680	Transition
France	Départements & Régions Cyclables	7,112	€ 7,112	Immediate
Germany	Allgemeiner Deutscher FahrradClub	7,214	€ 7,214	Transition
Greece	Ecological Movement of Thessaloniki	1,430	€ 1,430	Transition
Ireland	National Trails Office	1593	€ 1,593	Immediate
Italy	Federazione Italiana Amici della Bicicletta	5,468	€ 5,468	Transition
Lithuania	Lithuanian Cyclists' Community (LCC)	681	€ 1,000	Transition
Luxembourg	Lëtzebuerger Velos - Initiativ	107	€ 1,000	Immediate
The Netherlands	Stichting Landelijk Fietsplatform	1,451	€ 1,451	Immediate
Norway	Norwegian Public Roads Administration	5,399	€ 5,399	Transition
Poland (South)	M&G Consulting Marketing and Dr inż. Andrzej Zalewski,Coordinator	3,122	€ 3,122	Transition
Poland (North)	Pomeranian Association Common Europe	1,991	€ 1,991	Transition
Portugal	Federação Portuguesa Cicloturismo e Utilizadores de Bicicleta	203	€ 1,000	Transition
Slovakia	Slovak Cycle Club	474	€ 1,000	Transition
Slovenia	Slovenian Cyclists' Network	343	€ 1,000	Transition
Switzerland	SwitzerlandMobility Foundation	934	€ 1,000	Immediate
Turkey	EnverCevko	190	€ 1,000	Transition
Ukraine	Kiev Cyclists Association	680	€ 1,000	Transition
UK	Sustrans	4,864	€ 4,864	Immediate

# National Contributions Going forward

For Transitional NECC/Cs:

- Be prepared that an invoice for 50% of the National Contribution will be sent to you in 2015.
- You don't necessarily have to pay it yourself but you should coordinate the payment.
- Continue to work towards establishing a full NECC/Cs (to help share the costs).
- If you think it will be difficult to meet the timetable, please contact us and see if we can find a solution.

# Other Services

Regular advanced services:

- Advanced services (web development and management, coordination etc.) for specific routes (e.g. EuroVelo 15)
- EuroVelo map (reprint and distribution)
- More developed promotion and communication services on the European level

Additional “out of the ordinary” services:

- Route coordination actions (add new routes etc.)
- EuroVelo route certification
- Consultancy services for specific countries (advice, presentations, evaluation, training etc.)

# National Contributions

## Concluding remark

“The decision to go ahead with introducing a national contribution is a huge step forward and the only way to ensure a sustainable basis for the European cycle route network and improve our services for our customers and you. We would like to thank you all your support in the past and in advance in the future.”

# National Contributions

Questions and comments?





Thank you for listening

For more information  
[eurovelo@ecf.com](mailto:eurovelo@ecf.com)

Rue Franklin, 28 1000 Brussels, Belgium Phone: +32 2 880 92 74 Fax: +32 2 880 92 75 office@ecf.com

[www.ecf.com](http://www.ecf.com)